

ZÜRICH
CONVENTION
CENTER

MAKE IT
UNFORGETTABLE





Our view of the Alpine panorama:

only the waters of Lake Zurich separate the Zurich Convention Center from the Swiss mountains.

CONTENTS

A WARM WELCOME	4
A CENTRAL LOCATION	6
A DIVERSE OFFERING	10
FLEXIBLE EVENT SPACES	16
ROOMS & CAPACITIES	20
ICONIC ARCHITECTURE	22

A photograph of a modern building facade. The central part of the image shows a wall made of light-colored, rectangular stone tiles arranged in a grid. Above this wall are four circular windows with white lattice patterns. Below the stone wall is a long, horizontal window with a white frame divided into many small rectangular panes. The building is set against a clear blue sky. The foreground is a dark, paved surface. The text 'A WARM WELCOME' is overlaid in white, bold, sans-serif capital letters on the stone wall.

**A WARM
WELCOME**



With 4,500 seats waiting to be filled, come and enjoy events, concerts and culinary highlights with stunning views of Lake Zurich and the mountains, whether you're here as a guest or hosting your own event.

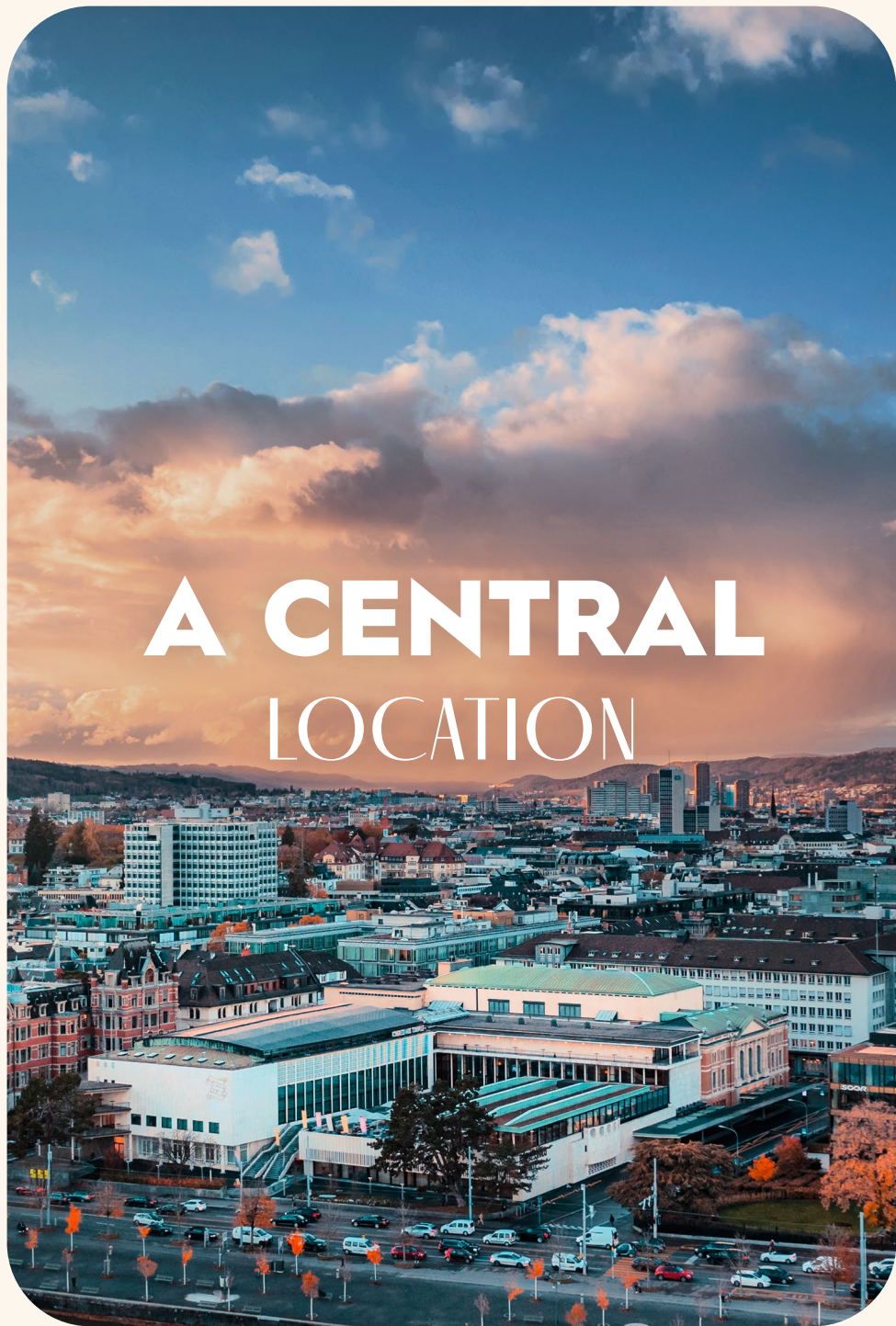
The Zurich Convention Center is a modern event venue in a central location that impresses with its distinctive architecture and individual flair. Since 2019, our operations have been certified as sustainable – from the foyer to our event spaces and catering outlets. This means you can help protect the planet while creating wonderful memories.

We look forward to welcoming you soon.



Michel Loris-Melikoff
Chief Executive Officer

A CENTRAL LOCATION



WHERE WE ARE

The newly refurbished Zurich Convention Center and historic Tonhalle complex are situated in the heart of the city, so we not only offer a unique view of Lake Zurich and the mountains, but also the opportunity to welcome guests from around the world in a central location.

Whether it be international conventions attracting several thousand participants, large-scale conferences with star guest speakers, or exclusive events in LUX Restaurant & Bar, the views will always be breathtaking – and our Convention Center will make your plans a reality in a sustainable way.

GLOBALLY CONNECTED

Situated in the heart of Europe, Zurich enjoys ideal transport links. Direct flights from 190 destinations in 68 countries will bring you to our city. Moreover, it only takes 20 minutes to travel from the airport to our Convention Center.

HEART OF ZURICH

- **Views of the Alpine panorama**
- **Only a short ride from the airport**
- **Ideal public transport connections**
- **Over 15'000 hotel beds**







A DIVERSE OFFERING

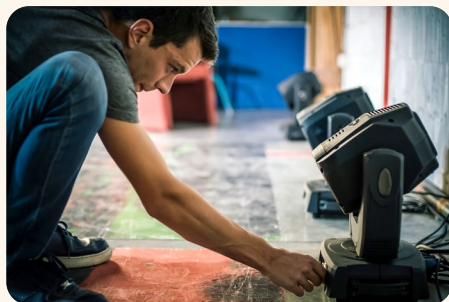
EXPERIENCE DIVERSITY



With 5,300 m² of event space, 4,500 seats and 20 different rooms and foyers, the Zurich Convention Center offers an exceptional setting for every occasion. No other venue in the heart of Zurich provides such flexible and versatile possibilities.

On request, almost every room can be enlarged, divided or combined with adjacent areas. Thanks to the building's distinctive layout across multiple levels, several events or breakout sessions can take place simultaneously, all under one roof.

DRIVEN BY PASSION



Service excellence has been part of our DNA for more than 80 years and is a tangible element of our corporate culture. As dedicated hosts, we organize events of all kinds with reliability, precision and great attention to detail.

Every member of our team acts with the needs of our clients in mind, thinks in solutions and upholds the highest standards of service. The appreciation and loyalty of our national and international clients are the greatest proof of our commitment and a true source of pride for us.

EVENT TECHNOLOGY



To bring your event to life, you can count on a team of true professionals by your side, providing reliable support from the initial idea to the final round of applause. In collaboration with our integrated partner Venon Projects AG, the Zurich Convention Center offers state-of-the-art technology on site in the following areas.

- Conference technology
- Projection and video technology
- Broadcast and camera technology
- LED screens
- ICT solutions
- Sound and simultaneous technology
- Lighting and rigging technology
- Stage construction and set design
- Event architecture

CULINARY EXCELLENCE



Event organizers benefit from a top-class catering concept with over 80 years of expertise. On request, our Head Chef creates tailor-made menus that turn any event into a culinary experience. Whether a reception, conference, gala or AGM, the Zurich Convention Center offers first-class dining for every occasion.

WHAT DEFINES US

- **A perfect combination of modernity and tradition**
- **Over 80 Years of Event Expertise**
- **5,300 m² of multifunctional event space**
- **4'500 seats and 20 different rooms**

CLIMATE COMES FIRST

The Zurich Convention Center Ltd. has been certified by ClimatePartner since 2019, ensuring that every event is climate neutral, with no additional cost for organizers.



ENERGY FROM THE LAKE



To support the City of Zurich's climate goals, we use lake water as a natural source for heating and cooling. A heat pump inside the building converts the energy from Lake Zurich into warmth or cooling, depending on the season. The water then flows back into the lake unchanged, creating a closed, local and CO₂-free energy cycle that operates right on our doorstep.

WE ARE SWISSTAINABLE

The Zurich Convention Center is part of the Swisstainable sustainability program and classified at Level II – engaged. This reflects our commitment to responsible corporate management and continuous development – contributing every day to a more sustainable Swiss tourism.





AN INTERNATIONAL ARENA

Many of the world's greatest stars have already performed at the Zurich Convention Center. Jazz legends like Louis Armstrong and Ella Fitzgerald have performed for audiences, as have rock and pop icons such as Ray Charles, Tina Turner and Deep Purple. We have also welcomed personalities

including Udo Jürgens, the Dalai Lama, Harry Belafonte, Dakota Johnson and Eddie Redmayne, as well as Federal Councillors, US Presidents and Nobel Prize winners for Literature. Even sporting legends such as Cristiano Ronaldo have visited the Zurich Convention Center.

YOUR ZURICH EXPERIENCE

Thanks to the central location of the Zurich Convention Center, everything is within easy reach, from the lake and the old town to the main station. More than 1,000 hotels are located within walking distance. Our guests benefit from short distances, excellent connections and an environment that offers everything for a successful stay.

Together with our partner Zurich Convention Bureau, we support you in planning unforgettable social programs and incentives, from city tours and cultural highlights to special experiences. Our Sales Team will be happy to assist you in selecting and booking your

accommodation and works closely with Zurich Tourism to provide the best possible support during your stay. Through our partnerships with numerous hotels, you can also benefit from attractive rates. With us, your stay in Zurich is perfectly organized from start to finish.



FLEXIBLE EVENT SPACES



Kongressfoyer

The blend of tradition and modernity makes the Zurich Convention Center a truly unique building.

In recent years, we have had the pleasure of welcoming millions of guests to our venue, and we value each and every one of them.



Kaktus Bar



Kongressvestibül

The building complex embodies significant Swiss architecture and is therefore considered a site of national importance. Generous green spaces and plenty of natural light highlight its remarkable architectural value.



Kongresssaal

With space for up to 4'500 people, the Zurich Convention Center welcomes visitors from all over the world.



Kongressfoyer

Our spaces can be individually adapted to a wide variety of layouts and sizes.



At the Zurich Convention Center, your plans for congresses, meetings, corporate events, entertainment, annual general meetings and more become unforgettable experiences.

We look forward to welcoming you in person to over 5,300 m² of versatile event space.



ROOMS & CAPACITIES

Max. number of people

Function rooms	Area (m²)	Height (m)	Max. gross exhibition area (m²)	Max. perm. pers. in exhibition	Flooring	Theatre	Seminar	U-shape	Block	Banquet oval	Banquet rectangular	Cocktail reception	Drinks reception
Kongresssaal	865	~ 11.6			parquet	1,125	593	108		600	758	592	1,076
Kongresssaal Gallery	360				parquet	540							
Kongresssaal with Gallery					parquet	1,665							
Kongresssaal with Foyer	1,402		1,071	1,627	parquet	1,476	899			900	768	1,032	1,627
Kongresssaal with Gallery and Foyer					parquet	2,000							
Kongressfoyer	550	~ 8.00			parquet					240		352	680
Kongressfoyer Gallery	354	3.95			parquet	145							
Kongressvestibül	953	4.15	583	1,525	terrazzo								
Gartensaal 1 A-C	519	4.25			terrazzo	600	378			330	432	348	648
Gartensaal 1 A-B	370				terrazzo	518	249	84		280	323	280	450
Gartensaal 1 B-C	342				terrazzo	300	234	76		230	283	204	300
Gartensaal 1 A	174				terrazzo	182	94	48		140	160	112	219
Gartensaal 1 B	196				terrazzo	232	96	48		140	200	112	257
Gartensaal 1 C	146				terrazzo	169	76	48		110	120	112	192
Gartensaal 2	338				terrazzo	473	258	86		240	320	228	430
Gartensaalfoyer	494	~ 5.00			terrazzo							268	520
Gartensaal 1 with Foyer	1,013				terrazzo					780		680	1,415
Gartensaal 2 with Foyer	832				terrazzo					670		436	916
Gartensaal 1+2 with Foyer	1,351		987	1,916	terrazzo					990	1,248	768	1,738
Seezimmer 1 A-C	174				parquet	171	70			120	97	112	219
Seezimmer 1A	58				parquet	50	31	21	28	30	48	50	50
Seezimmer 1B	55				parquet	50	31	21	28	30	48	50	50
Seezimmer 1C	56				parquet	55	31	20	28	30	48	55	55
Seezimmer 2	115				parquet	50	43	28	36	50		50	50
Seezimmer 3	85				parquet	50	49	29	36	40	50	50	50
Seezimmer 4	60				parquet	60	28	21	27		34	44	78
Seezimmer 3+4	145				parquet	150	85			80	80	84	187

Function rooms	Max. number of people												
	Area (m²)	Height (m)	Max. gross exhibition area (m²)	Max. perm. pers. in exhibition	Flooring	Theatre	Seminar	U-shape	Block	Banquet oval	Banquet rectangular	Cocktail reception	Drinks reception
Seezimmer 5	15				parquet								
Seezimmer 6	63				parquet	69	26		32			60	80
Vortragssaal 1	132				parquet	100	74	39	32	100	100	80	100
Vortragssaal 2	167				parquet	180	90	79		110	128	100	200
Vortragssaalfoyer	132				parquet								100
Boardroom	59.73												
Konzertfoyer	742		485	980	parquet								
Konzertfoyer Gallery	190				parquet								
Lounge	62				parquet								50
Tonhalle Vestibül	647		436	665	terrazzo								
Restaurant					terrazzo								
Restaurant terrace					natural stone								

All rooms have daylight ~ = different room heights

The figures listed above refer to maximum capacities.

The type of seating and layout of the respective event may mean that capacities are reduced.

Types of seating



Theatre



Seminar



U-shape



Block



Banquet oval
(10 per table)



Banquet rectangular
(8 per table)



Cocktail reception



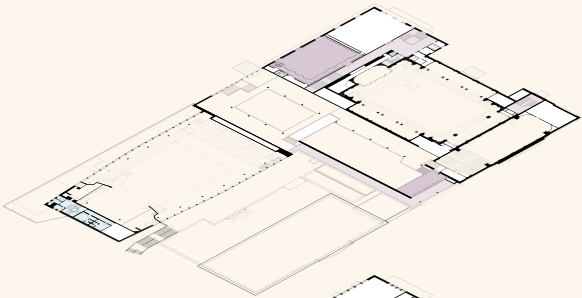
Drinks reception

A photograph of a modern building with a white stone facade, large grid windows, and palm trees, with the text "ICONIC ARCHITECTURE" overlaid. The building features a prominent white stone wall on the left and large, multi-paned windows on the right. Two palm trees are visible in front of the building. In the foreground, there is a curved concrete wall and a colorful, multi-colored fence. The sky is blue with some clouds.

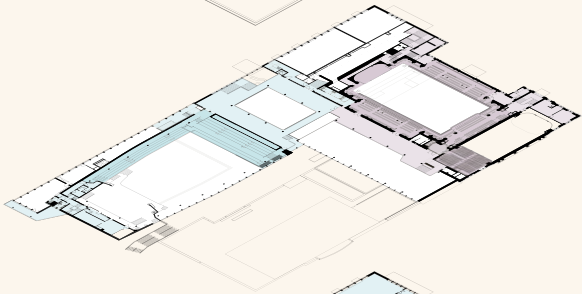
ICONIC ARCHITECTURE

LEVELS PLAN

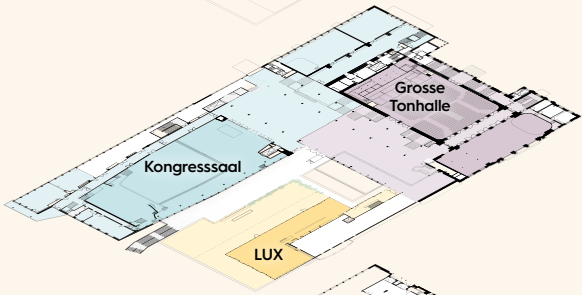
LEVEL 3



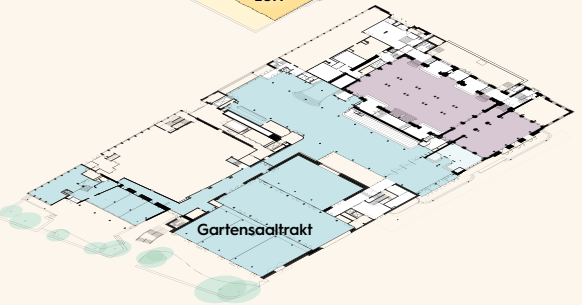
LEVEL 2



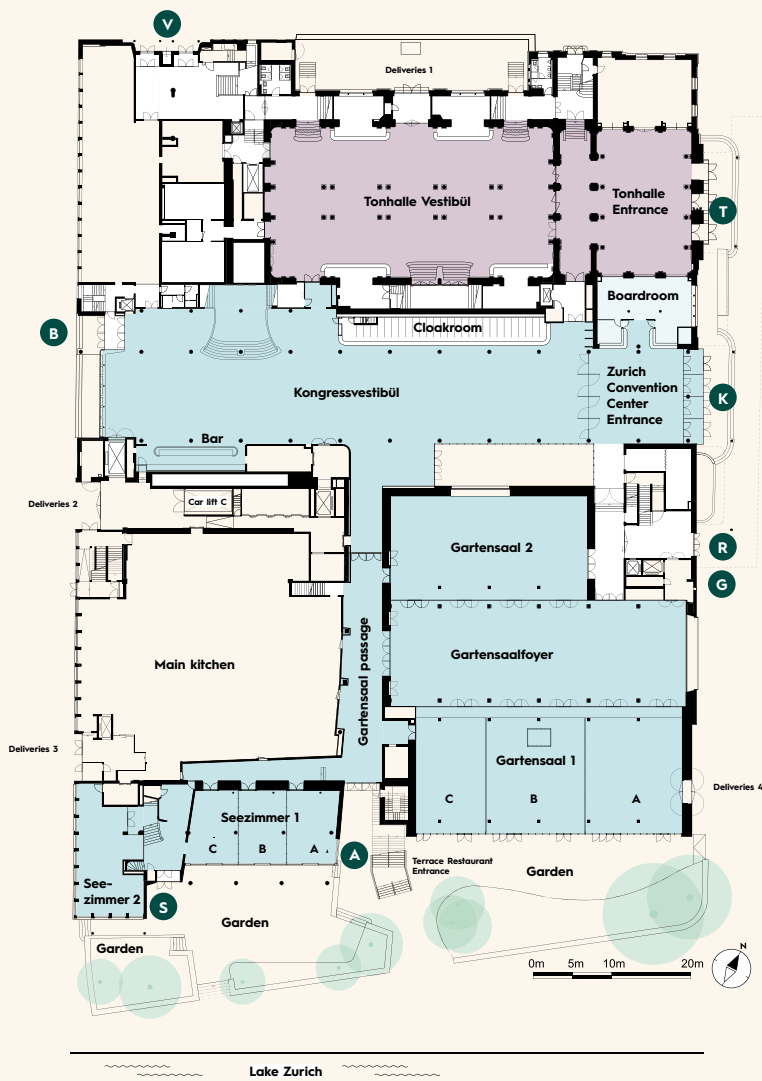
LEVEL 1



LEVEL 0

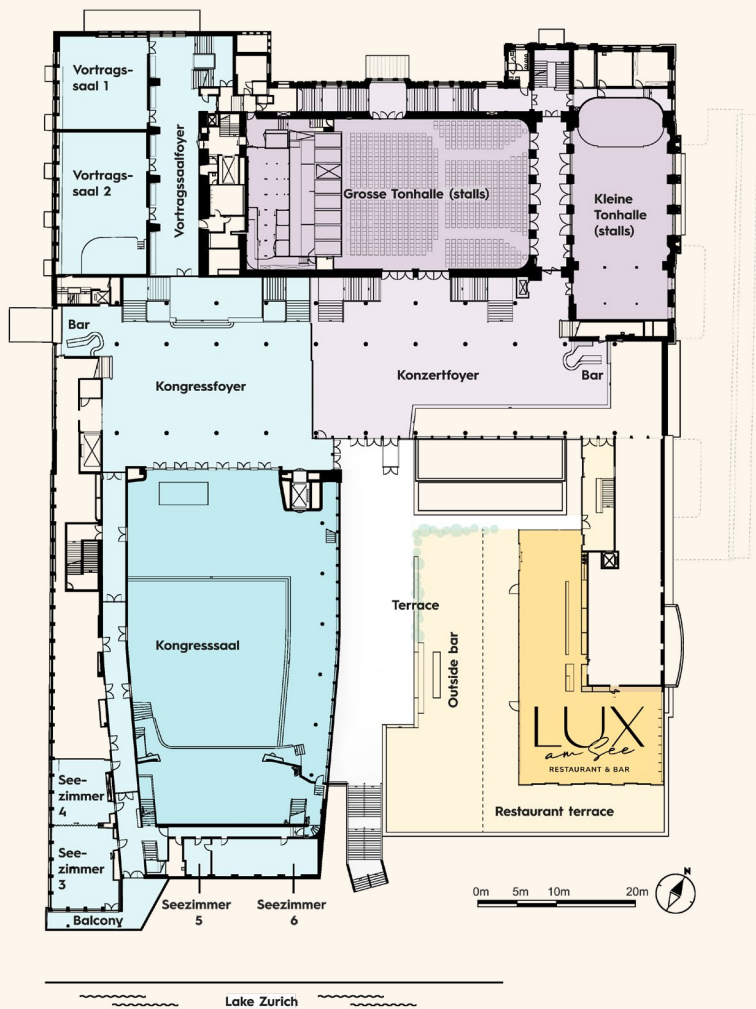


LEVEL 0

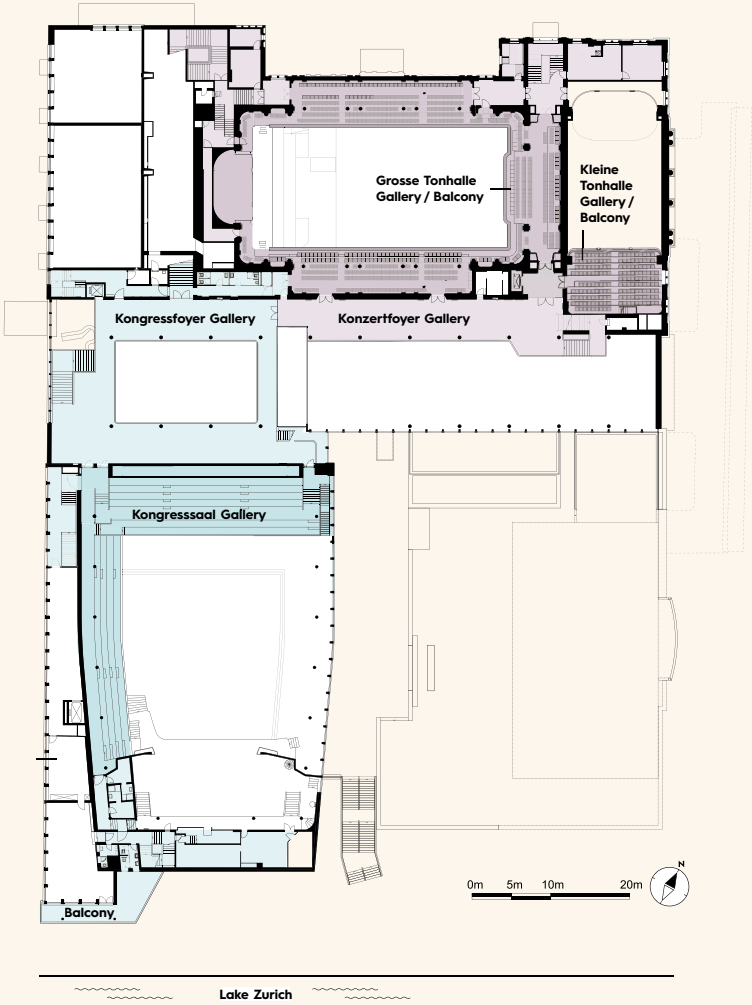


- | | |
|--|--|
| T Tonhalle Entrance | A Gartensaalpassage Entrance |
| K Zurich Convention Center Entrance | S Seezimmer Entrance |
| R Restaurant Entrance | B Zurich Convention Center Entrance |
| G Gartensaal Entrance | V Vortrags- & Vereinssäle Entrance |

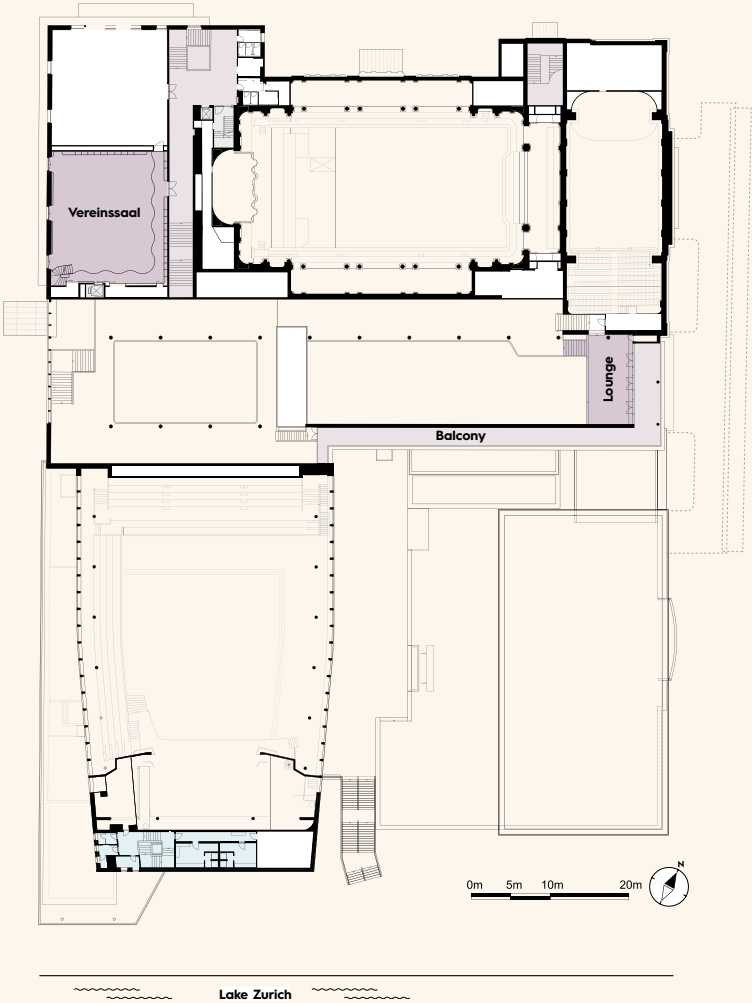
LEVEL 1



LEVEL 2



LEVEL 3



CONTACT US

Zurich Convention Center Ltd.

Kongresshaus Zürich AG

Gotthardstrasse 5

8002 Zurich

Switzerland

SALES@ZURICHCONVENTIONCENTER.COM

T. +41 44 206 36 20



Explore our website

WWW.KONGRESSHAUS.CH/EN